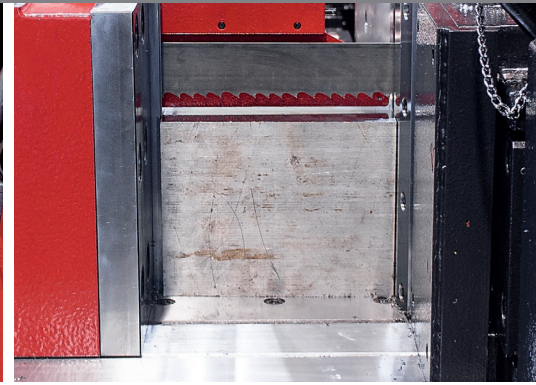
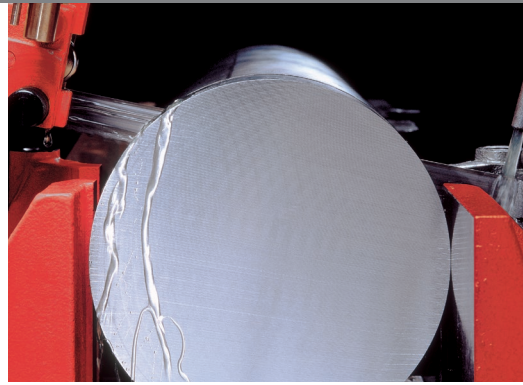


# AXCELA BOOSTER

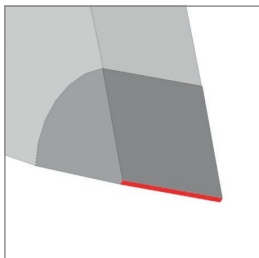
Available from 2020



## | AXCELA BOOSTER



Uncoated



Microphase

Set carbide band saw blade for high-performance standard saws. This innovative design allows to operate this carbide blade on conventional band machines without carbide option.

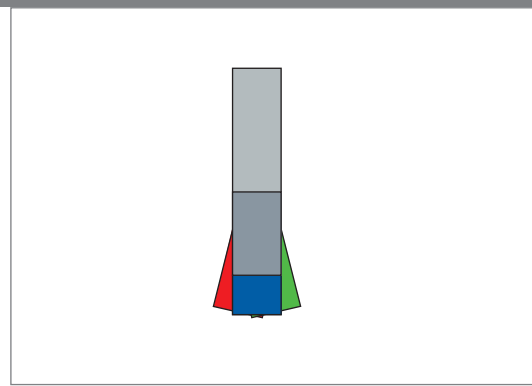
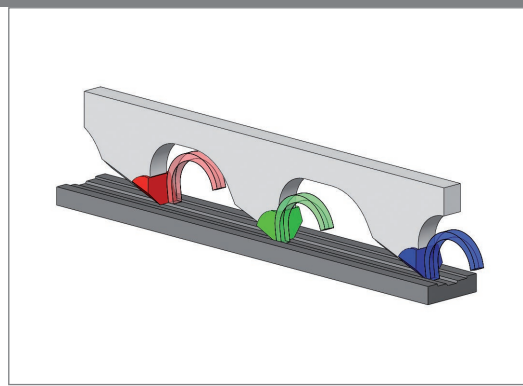
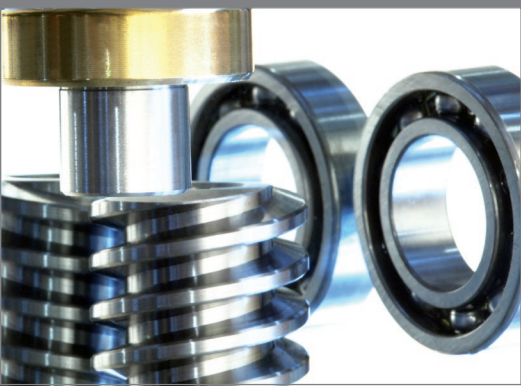
### Properties

- set tooth design
- microphase
- improved clearance for better chip removal

### Advantages

- suitable to be used also on conventional machines
- shorter chips for optimized chip removal
- reduced risk of tooth stripping and breakages
- high cutting performance

# AXCELA BOOSTER



slanted 3-piece tooth group



## Application materials – AMADA AXCELA BOOSTER

Recommended	Suitable	Limited suitability*
Construction steel, hard-treated steel, cold-worked steel, cast steel, ball-bearing steel	Hot-working steel, aluminium alloys, copper alloys	Stainless steel

- Construction steel **St**
- Heat-treated steel **QT**
- Cold-worked steel
- Hot-working steel
- Stainless steel **304**
- Cast steel

## Toothing selection – AMADA AXCELA BOOSTER

For best results AMADA suggests following tooth pitches when using the AXCELA BOOSTER. In case of doubt, a finer tooth pitch should be selected.

Material thickness	100 mm	200 mm
	3/4	
	2/3	
		1,8/2

- Ball-bearing steel
- Aluminium alloys **Al**

## Line-up – AMADA AXCELA BOOSTER

Height	Thickness	1.8/2 V3	2/3 V3	3/4 V3
34	1.1		●	●
41	1.3	●	●	

- Copper alloys **Cu**

Recommended run-in surface: 0.3 m<sup>2</sup>

\* With respect to application notes, please consult your AMADA sales representative